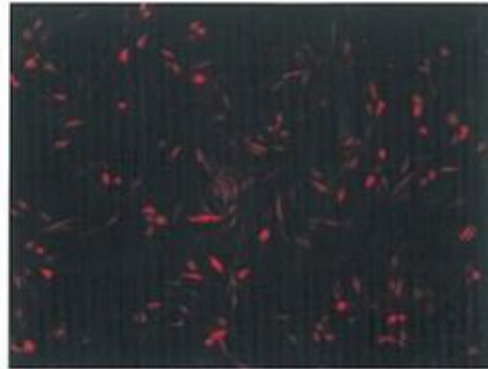
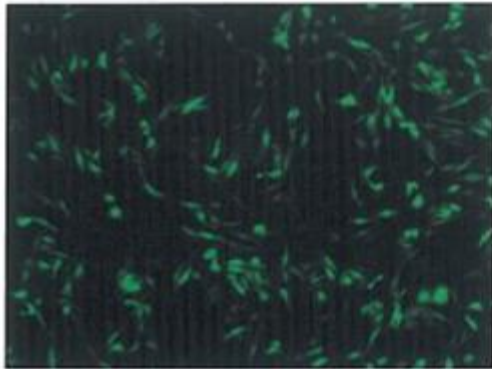


GIV-CARD-EGFP

pDsRED-Mito



[VR-01LB-00, VR-01LB-01](#)

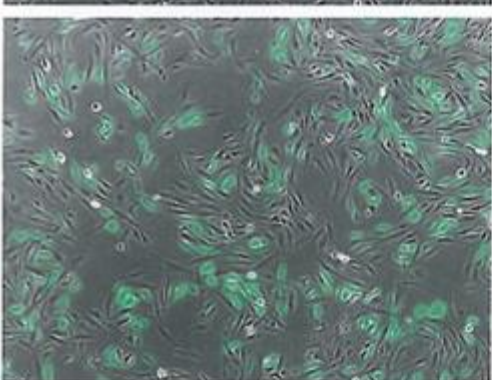
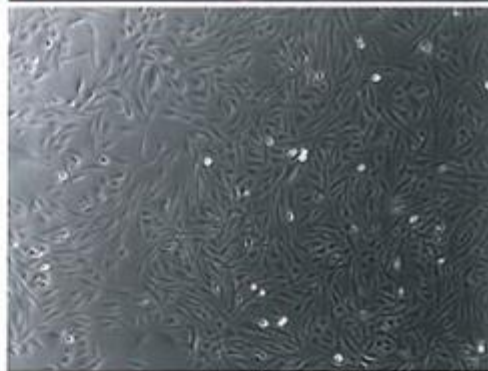
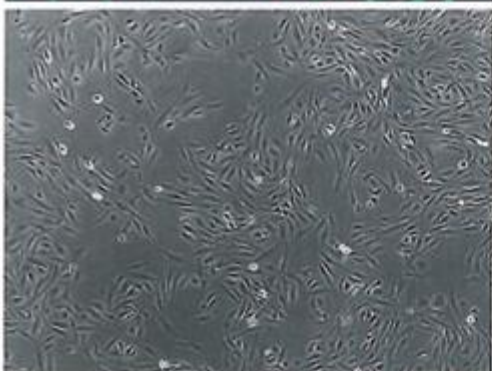


Fig. 1: Expression of 2 fluorescent-labeled proteins in GB3 brain cells transfected with Viomer® RED

- GB3 is a cell line established from grouper (fish: *Epinephelus* sp.) brain cells, fibroblast-like and epitheloid cells. Growth in 10% FBS L15 medium.
- Reverse transfection with standard protocol, 24-well plate format, 1×10^5 cells/well
- approx. **70% efficiency**, 18h post transfection
- Higher efficiency and cell viability compared to Lipofectamine® 2000 (not shown)

Data from Chien-Wen Chen, Lab of CY Chang, Institute of Cellular and Organismic Biology, Academia Sinica, Taipei (Taiwan)