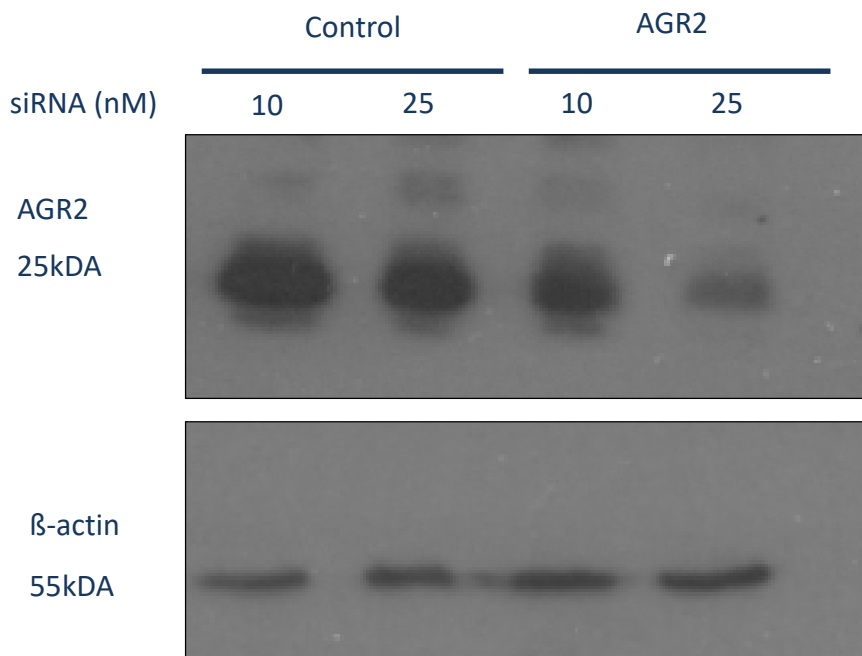




[VB-01LB-00, VB-01LB-01](#)



**Fig. 1: Knockdown of AGR2 gene expression in human prostate carcinoma 22Rv1 cells transfected with Viromer® BLUE**

- Tests with 10 and 25nM siRNA (final conc. in wells)

Data from E. Oppong & D. Saha, Inst. for Toxicology and Genetics (ITG), KIT-Karlsruhe (Germany)